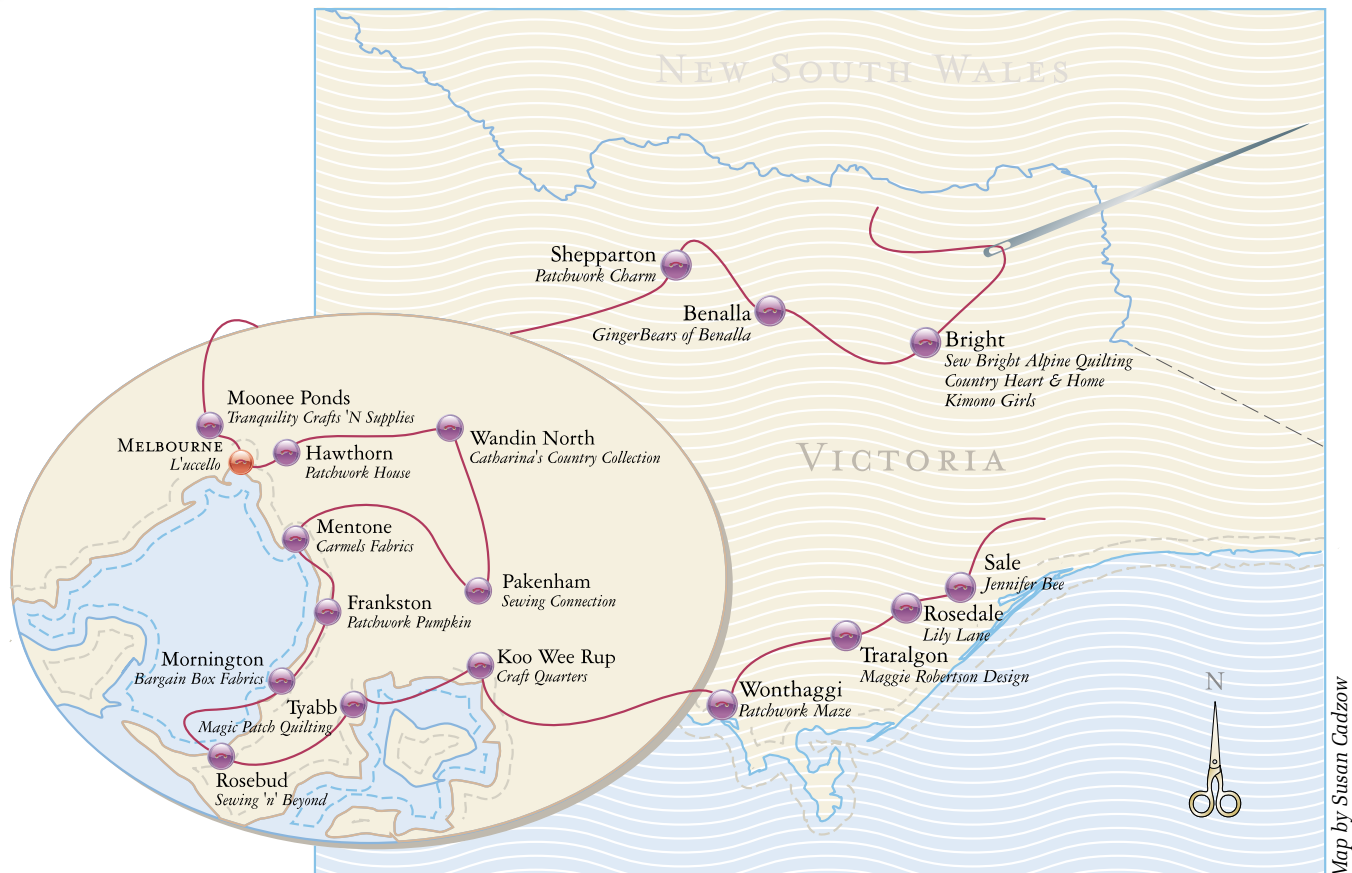


# East Victorian Escapades

By Jeannette Vermeulen



Follow the needle and thread, button by button, as we make our way around eastern Victoria.

Map by Susan Cadzow

From its magnificent alpine regions to its stunning coastal wilderness, East Victoria has much to offer in the way of magnificent natural beauty and friendly local communities. What better way to get a taste of what this great part of the state has to offer than by visiting all the charming quilt shops along the way? Pack your camera and get ready for another crafting adventure.

We begin our tour in Sale. With its long history as a port, acting as a gateway to the region, it's a fitting spot to start our explorations. We visit the gorgeous Jennifer Bee, stocking up on stunning embroidery designs, before heading on to Rosedale, home to Lily Lane. The next stop is Maggie Robertson Design in Traralgon, the entertainment capital of the Latrobe Valley.

Heading towards the coast, we visit Patchwork Maze in Wonthaggi, where you will be amazed by the range of stock available. We then pass through the interestingly named town of Koo Wee Rup, known for producing excellent asparagus. If that's not quite to your taste, we're sure Craft Quarters will be!

Next, we kick off a leisurely tour of the gorgeous Mornington Peninsula, starting with a visit to Magic Patch Quilting at Tyabb and

followed by Sewing 'n' Beyond in Rosebud, Bargain Box Fabrics in Mornington and Patchwork Pumpkin in Frankston.

In the suburbs of Melbourne, we visit Carmels Fabrics in Mentone, Sewing Connection in Pakenham, Catharina's Country Collection in Wandin North and Patchwork House in Hawthorn. We explore the heart of the city next, indulging in all the fine dining and shopping Melbourne is famous for. This includes a visit to the historic Nicholas Building, home to the sophisticated L'ucello.

Moonee Ponds is our next port of call as we drop by Tranquility Crafts 'N Supplies for more retail therapy. From there, we head back inland to Shepparton where, apart from the great food and wineries, Patchwork Charm is sure to steal your heart.

In the beautiful rural landscape of Benalla, we unearth a jewel of a craft shop in GingerBears of Benalla, a one-stop shop for all things cute and cuddly. Finally, we finish our easy-going eastern sojourn in Bright, a stunning area of sub-alpine valleys and high plains. There is plenty to see and do year-round in this charming region, including visiting its three fantastic craft shops: Sew Bright Alpine Quilting, Country Heart & Home and Kimono Girls!

Jennifer Bee *Sale*

Jennifer Bee relocated her shop and classes to her studio in early 2010. With such beautiful surroundings going to waste and rising costs to consider, the move seemed only logical. And with classes at almost capacity, it appears to have been the right decision.

Jenny has all the leading brands of stranded cotton, embroidery silk and the largest range of crewel wool in Gippsland. She also carries a large range of silk ribbons and fabrics to cater to all of your embroidery needs. Visiting tutors hold weekend workshops every term while classes are held daily. These include all types of embroidery — stumpwork, ribbon, wool and smocking — are just some that are taught in the friendly and welcoming atmosphere. Jenny also has her own specialty kits available in stumpwork, ribbon and wool embroidery.



Call in to see the range or give her a call to pop in if it's after hours. The shop is open Tuesday to Friday from 9am to 5.30pm, but closed between 12.45pm and 3pm on Wednesdays and Fridays. With its personable feel and Jenny's excellent advice and service, this shop is a must-visit.

**Local knowledge:**

The shop's new location is easy to find — simply follow the highway through Sale heading towards Bairnsdale, turn

left towards Maffra at the Maffra Road turn-off, travel along this road for 2km, turn left just past the cemetery and Jennifer Bee is located on your right, to the side of the big, old school house.

**Address:** 14 Back Maffra Road,  
Sale Vic 3850

**Phone:** (03) 5143 2899

**Email:** [jenniferbee@bigpond.com](mailto:jenniferbee@bigpond.com)

**Website:** [www.jenniferbee.com.au](http://www.jenniferbee.com.au)

Lily Lane *Rosedale*

Situated in the historical town of Rosedale, Lily Lane is a delightful store owned and operated by Jennifer McMillan. Craft fanatic Jennifer purchased this store four

years ago so she could share her creative skills and enthusiasm with other crafters.

The walls at Lily Lane are covered in beautiful quilts and the shop is filled with wonderful displays that change regularly, so there is always new inspiration to be found in-store.

Locally, Lily Lane is well-known for its diverse range of stock. Here, you'll

find everything from batiks and orientals to country styles, florals, novelty prints and fabric panels. There's a wide range of books and patterns available and a great variety of block of the month and pattern of the month programs on offer. For those who can't make it into the shop, Lily Lane provides a prompt mailorder service and, where possible, aims to get all orders shipped on the same day.

**Local knowledge:**

Lily Lane has recently moved across the street to London House. Originally built in 1882 as a drapery, it became a court house, a Masonic temple, and now the new home of this charming shop!

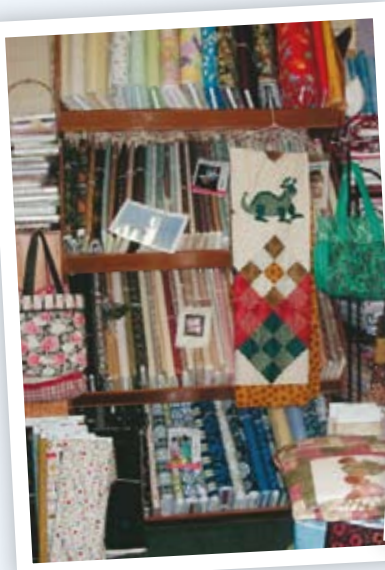
**Address:** 26–28 Prince Street,  
Rosedale Vic 3847

**Phone:** (03) 5199 2777

**Fax:** (03) 5148 6204

**Email:** [jennifer@lilylane.com.au](mailto:jennifer@lilylane.com.au)

**Website:** [www.lilylane.com.au](http://www.lilylane.com.au)



## Maggie Robertson Design

Traralgon

Set in a cottage, Maggie Robertson Design is a cosy little nook filled with gorgeous fabrics and beautiful quilts. When you enter the store, the first thing you see is owner Carole McLennan's latest quilt design hanging in the entrance and from there the store opens up in front of you in a rainbow of pretty florals, traditional Japanese fabrics, blenders and batiks. Soft classical music adds to the wonderful atmosphere, while the beautiful fabrics and colourful threads entice closer inspection.

You'll be inspired by Carole's unique designs decorating the store and no doubt you'll be very keen to try one of her wonderful patterns. Maggie Robertson Design stocks a great range of fabrics, kits, patterns, jelly rolls, layer cakes and quilting supplies. Carole offers exciting BOM programs, beginners' and special-project classes,



Jane Austen's Bonnet by Brenda Ryan features 25 stitchery blocks with Cottage Garden Threads. Block of the Month over six months is \$100 for the first month, followed by \$50 for the next five months. Choice of fabrics. Contact Carole for a sign-up form.

and holds workshops with guest tutors several times a year. Carole also organises a wonderful tutored weekend retreat where everyone is taught at their level — from beginner to advanced.

Located on the approach to the CBD from Melbourne, Maggie Robertson Design is open Monday to Thursday



from 10am to 5pm, and Friday from 10am to 6pm.

**Local knowledge:**

"Traralgon is a large town with many restaurants and great shopping," Carole says. "There's a lovely large park in the centre of town."

**Address:** 132 Princes Highway, Traralgon Vic 3844

**Phone:** (03) 5175 0725

**Email:** sales@maggier.com

**Website:** www.maggier.com

## Patchwork Maze

Wonthaggi

It's certainly a special time for this marvellous quilt shop in the Bass Coast Shire of Gippsland — it's celebrating 20 years of business! Jeanette Clark first opened the shop to satisfy the community's need for patchwork supplies and sewing machines and offered classes, including teaching ladies how to use their newly purchased machines.

Patchwork Maze specialises in colourwash quilts, and caters to all

types of patchworkers. The shop offers a machine-quilting service, and sells the Husqvarna Viking Mega Quilter, Inspira Quilting Frame and QBOT. "We are the only agent in Gippsland for the Handi Quilter range of longarm quilting machines and the Sweet Sixteen sit-down quilting machine," Jeanette says.



The Ambience colourwash quilt kit is available for \$195. Check the shop website for more great quilt kits.

Patchwork Maze holds patchwork and machine-embroidery classes to suit all levels of skill. The shop offers service for all makes and models, and there are a number of clubs available for owners of Husqvarna Viking, Brother and Babylock sewing machines and overlockers. With its sociable atmosphere, you'll feel right at home as you explore every nook and cranny.

**Local knowledge:**

Patchwork Maze is holding a 20th anniversary quilt show and celebration on October 15 and 16 at the Wonthaggi Workmens Club. Contact the shop for more details about joining this very special occasion.

**Address:** Plaza Walk Arcade, 23 Murray Street, Wonthaggi Vic 3995

**Phone:** (03) 5672 4777

**Fax:** (03) 5672 4427

**Email:** patchworkmaze@bigpond.com

**Website:** www.patchworkmaze.com.au



## Craft Quarters

Koo Wee Rup

**E**ighty kilometres from Melbourne, in the heart of “asparagus country”, is Koo Wee Rup, a picturesque little town with a population of less than 3000. The small town boasts a fabulous quilting store, fit to rival any you could find in the city.

Craft Quarters is owned and operated by Estelle and Raelene, who believe the only type of service to receive is the best. “We offer exceptional customer service, high-quality products, expert teachers for our classes and passionate, experienced people to help our customers,” Raelene says.

Raelene and Estelle run their shop with an infectious passion and excitement for the craft industry. Craft Quarters carries an exceptional range of products ranging from more than 3000 bolts of stunning fabric including batiks, and kits from local and international designers, to Elna sewing machines and exclusive patterns. The store offers



inspiring BOM programs and helpful tuition, all in a bright, fresh and inviting environment. “You are always welcomed into our warm and friendly store with a smile, lots of fun and, most importantly, an opportunity to let your creative side shine,” says Estelle.

Craft Quarters is open Monday to Friday from 9am to 4pm, and Saturdays from 9am to 1pm.

**Local knowledge:**

When first settled, Koo Wee Rup was 40,000 hectares of swamp land. Early pioneers dug 400km of drains using picks, shovels and wheelbarrows to make the land inhabitable.

**Address:** 312 Rossiter Road,  
Koo Wee Rup Vic 3981

**Phone/fax:** (03) 5997 1779

**Email:** [sales@craftquarters.com.au](mailto:sales@craftquarters.com.au)

**Website:** [www.craftquarters.com.au](http://www.craftquarters.com.au)

## Magic Patch Quilting

Tyabb

**I**f smiles are contagious then you sure won't be able to stop grinning after a visit to Magic Patch Quilting in Tyabb. With its welcoming atmosphere and quilt-loving staff, Magic Patch Quilting is a fun place to be.

You're sure to encounter many happy faces as you enter the shop, and the enthusiasm is catching. “The sound of laughter from our many classes usually greets our customers,” Carol says.

This initial greeting is followed by an enticing selection of patchwork goodies sure to tempt, and a variety of beautiful displays. “There is something different everytime you visit!” Carol says.

Magic Patch Quilting carries a large range of reproduction fabrics, orientals and speciality fabrics such as vintage children's prints and lovely vintage florals. A large range of patterns designed to complement the fabric

collection is also available exclusively to the shop.

Patchwork classes and one-day workshops are offered, perfect for everyone from beginners to those who want a challenge. “We pride ourselves on our classes; everyone is catered for with many projects to choose from,” Carol says.

**Local knowledge:**

“Tyabb has a large Antique Centre that brings a lot of people to our area,” Carol says. “We are part of the beautiful Mornington Peninsula, which is renowned for its beaches, national parks, wineries and great places to visit.”

**Address:** 1525 Frankston-Flinders Road,  
Tyabb Vic 3913

**Phone:** (03) 5977 3332

**Email:**  
[magicpatchquilting@bigpond.com](mailto:magicpatchquilting@bigpond.com)

**Website:**  
[www.magicpatchquilting.com.au](http://www.magicpatchquilting.com.au)



## Sewing 'n' Beyond

Rosebud

The lovely Sewing 'n' Beyond is situated in the seaside resort of Rosebud on the Mornington Peninsula. It first opened its doors in February this year, with owner Julianne Whinney having been in the industry for 12 years.

You could not ask for a warmer welcome when you enter the shop. With its idyllic setting for classes right in front of the large windows, the shop is a sewer's dream. The scene is dominated by the vibrant colours from the fabulous range of patchwork and fashion fabrics, along with damasks, oriental, batiks and a full range of haberdashery. There is also a display of Brother, Janome and Elna sewing and embroidery machines to investigate, making this a real one-stop sewing shop.

Sewing 'n' Beyond offers weekly classes and monthly workshops in patchwork and quilting, funky bags, wacky dolls, trendy home sewing and out-of-this-world machine embroidery.



"The most exciting adventure into our sewing classes is the PowerPoint presentation on software for the embroidery machines," Julianne says.

The tutors and staff here are all very creative, as you can see by the wonderful displays, and are more than happy to share their knowledge. Call in Monday to Friday from 9am to 5pm or Saturday 9am to 1pm to explore everything you can imagine to do with sewing 'n' beyond.

### Local knowledge:

March is a particularly great month to visit. The annual kite festival is held on the Rosebud foreshore during the Labour Day weekend and, on the last Saturday, the famous Red Hill show is held, showcasing many quilts and crafts.

**Address:** Shop 1b, 9 Rosebud Parade, Rosebud Vic 3939

**Phone:** (03) 5981 2020

**Fax:** (03) 5982 1820

## Bargain Box Fabrics

Mornington

Bargain Box Fabrics has operated in Mornington for 21 years and is renowned for its old-fashioned customer service, the outstanding product knowledge of its staff and its great collection of fabrics. Jenny Dimech, who has always been passionate about sewing and patchwork, has owned and run the business for the past three years.

As soon as you set foot in this lovely store, you are always met with a friendly

smile and a warm welcome. Bargain Box Fabrics is a peaceful, neat shop with a wonderful relaxed atmosphere, making it an extremely pleasurable place to shop. This outlet specialises in a wide range of fashion fabrics and bright patchwork fabrics including collections from Amy Butler. The store also carries a great range of patterns from McCalls, Simplicity, Kwik Sew and Burda Patterns, and can order in Vogue

patterns. A wide selection of trims and haberdashery is available.

Bargain Box Fabrics is a dealer for Janome and Elna sewing machines and overlockers and Horn sewing cabinets, as well as offering sewing machine and overlocker servicing for all makes and models. Scissor sharpening is done fortnightly in store and a wide range of classes in patchwork, bag making, and dressmaking is also available.

### Local knowledge:

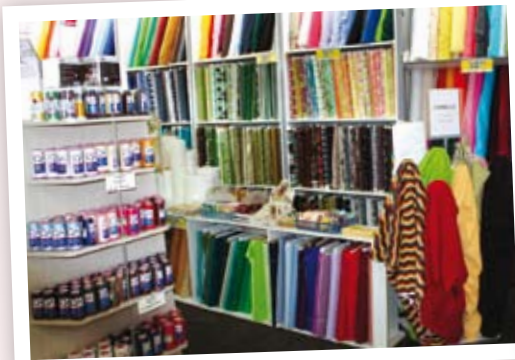
"Mornington is situated on the Mornington Peninsula. It is a seaside town, with strip shops, and a warm, friendly atmosphere, with no hustle and bustle," says Jenny.

**Address:** Shop 2a, 55 Barkly Street, Mornington Vic 3931

**Phone:** (03) 5975 8233

**Fax:** (03) 5975 8033

**Email:** bargainboxfabricsmornington@bigpond.com



## Patchwork Pumpkin

Frankston

After many years of working in retail and teaching patchwork classes, Therese opened Patchwork Pumpkin in 2000. She has since expanded the business, taking over the shop next door so that she now has more space to run classes and the mailorder side of her business.

Patchwork Pumpkin is a colourful store with a relaxed atmosphere. The walls are decorated with samples from classes and new designs, and the small team of staff is keen to offer a warm welcome and friendly assistance.

Patchwork Pumpkin stocks a fantastic variety of fabrics ranging in style from country prints through to brights, shabby chic and funky. The store also carries the RuleSteady from Keep Quilting, hexagon papers from Patchwork with Busyfingers, Dylon Dyes, Gütermann and Signature threads, JA Bonwick & Co quilting hoops, Matilda's Own wool and cotton batting, Wonder Under fusible



web and many other haberdashery items for quilters. A great range of classes, for all skill levels, is available.

**Local knowledge:**

Patchwork Pumpkin holds "Who Cares? We do!" days, where ladies bring their machines and the store provides a simple pattern and fabrics donated from suppliers. Together the ladies sew quilts that are donated to Victoria's Royal Children's Hospital. The group also sewed and donated quilts to the Black Saturday bushfire victims.

**Address:** 61 Kareela Road,  
Frankston Vic 3199

**Phone:** (03) 9775 5920

**Fax:** (03) 9785 6410

**Email:**

[orders@patchworkpumpkin.com.au](mailto:orders@patchworkpumpkin.com.au)

**Website:**

[www.patchworkpumpkin.com.au](http://www.patchworkpumpkin.com.au)

total price:  
**\$135.00**



66.75" x 57.25"

[www.widebacks.com.au](http://www.widebacks.com.au)



**Widebacks**  
australia



Pack includes:

- All fabric for quilt top
- Widebacks backing fabric (Tie dye 'Sunburst Orange' illustrated)
  - Binding fabric
  - Photo + instructions
- Express postage within Australia

**BRENDA WADE**

**P:** (08) 8370 7546 **M:** 0419 199 727

**E:** [brenda@widebacks.com.au](mailto:brenda@widebacks.com.au)

## Carmels Fabrics

Mentone

A real pillar of the community, Carmels Fabrics has been operating for more than 30 years. Owned by Carl Petti and Natalie Seymour, and managed by Veronica Cunningham, the shop is best known for its large range of amazing local and international craft fabrics, dress and dance fabrics, and its friendly, well-informed staff.

It all adds up to a great creative buzz that lends a welcoming atmosphere to the shop. Along with the abundance of beautiful, inspiring fabrics, you'll find everything your crafting heart desires in-store. Brands stocked include Matilda's Own, Signature Threads and Jinny Beyer Colour Palette. Carmels Fabrics also stocks jelly rolls and fat quarters, plus a large range of laces, buttons, trims and ribbons to embellish your quilts and garments.

If the captivating selection of craft fabric has your fingers itching to get stitching, you can stock up starting at

\$5.99 per metre, with most just \$10.99 per metre. You can be assured of the best-quality advice and product, as the shop's fabric buyers travel overseas regularly to source the very best the world has to offer.

You can join the Carmels First Club for access to special offers and news about the latest fabrics and sales, plus bonus vouchers to spend in-store. Sewing-machine servicing and scissor sharpening are also available.

**Local knowledge:**

Mentone is best known for its gorgeous beach, extending from the cliffs in Beaumaris to Warringal Road, Parkdale.



**Address:** 11–13 Como Parade West, Mentone Vic 3194

**Phone:** (03) 9095 7731

**Fax:** (03) 9583 5009

**Email:** [enquiries@carmelsfabrics.com.au](mailto:enquiries@carmelsfabrics.com.au)

**Website:** [www.carmelsfabrics.com.au](http://www.carmelsfabrics.com.au)

## Sewing Connection

Pakenham

Sue and Sandy started Sewing Connection 23 years ago just to give themselves a part-time job. Since then it has grown to be a well-known Bernina and Brother Sewing Machine dealership, as well as a fully stocked patchwork emporium. Along with their staff Gel, Jenny, Janene, Val, Karen, Cheryl and Eloise, they are well versed

in all aspects of patchwork, quilting, sewing and machine embroidery.

When you enter Sewing Connection, you find a patchwork shop with a difference. Creativity is in the air as you are surrounded by samples in this wonderland of books, patterns and ideas. The shop offers a large range of the latest patchwork fabrics and notions, as well as Floriani stabilisers and Bernina Design Studio embroideries for machine embroiderers.

Fantastic classes and workshops are held every day to improve the

skills of the shop's loyal customers and beginners alike. These include specialty workshops with renowned quilting teacher Deborah Louie and quilt artist extraordinaire, Caroline Sharkey.

The shop is open Monday to Friday, 9.30am to 5.30pm, and Saturday, 9am to 4pm. Bus tours are welcome by appointment — and if you can't stop by in person, visit the website for a look at all the latest fabrics.

**Local knowledge:**

Pakenham's local cultural centre displays an eight-panel Cardinia embroidery depicting local landmarks and buildings, with a wonderful embroidery of flora and fauna in the shire planned as well.

**Address:** 115 Main Street, Pakenham Vic 3810

**Phone:** (03) 5941 2244

**Email:** [sewcon@bigpond.com](mailto:sewcon@bigpond.com)

**Website:** [www.sewingconnection.com.au](http://www.sewingconnection.com.au)



Advert  
catharina's country  
collections  
36

## Catharina's Country Collection

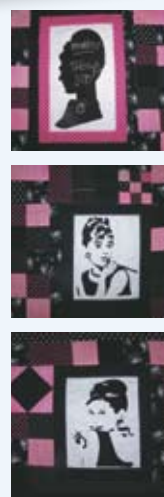
Wandin North

When travelling to the Yarra Valley, it's hard to go past this colourful patchwork shop. Catharina's Country Collection is a family-operated shop owned by avid quilter Catharina Sudholz and her brother Howard. Catharina and Howard originally began the business selling patchwork fabrics from her home, but as the business grew rapidly the pair took over a local wool shop and expanded into patchwork supplies.

Catharina's Country Collection is a bright and enticing store, bursting at the seams with beautiful stock. This shop carries a great range of products including fabrics, giftware, Singer and Pfaff sewing machines, the QBOT automated quilter from INSPIRA, and now the HQ 18 and HQ Sixteen quilting machines as well. Some of the latest machines are incredible for creating masterpieces, with fabulous embroidery packages available.



*Designed by Catharina, the gorgeous Breakfast at Tiffany's quilt captures the grace and sophistication that made Audrey Hepburn famous. The pattern is available for \$55, plus p&h, or grab a full kit for \$390, plus p&h. It can also be completed as a BOM at \$39 per month, plus p&h. Kits and BOM include Press N Bond, crystals and threads.*



Catharina and Howard also offer a variety of popular block of the month programs and classes are available, with well-known designers often appearing as guest tutors.

**Local knowledge:**

"Wandin is situated in the beautiful Yarra Valley, 10 minutes from the Dandenongs, in an area well known for wineries and its

scenery," Catharina says.

**Address:** 382 Warburton Highway, Wandin North Vic 3139

**Phone:** (03) 5964 3592

**Fax:** (03) 5694 2036

**Email:** sales@cccpatchwork.com.au

**Website:** www.cccpatchwork.com.au

## Patchwork House

Hawthorn

Patchwork House has been open since 1966 and Kylie and Michael Hawkins have owned the store since 2006. Kylie had been attending classes at the shop when the chance to purchase the business came up. Not surprisingly, patchwork addict Kylie eagerly seized the opportunity

to spend her days surrounded by patchwork supplies.

Patchwork House is the home of a wide range of fabrics, quirky gifts and excellent customer service. The store is filled wall to wall with beautiful fabrics and every available space is decorated with stunning quilt

samples. The range of fabrics available is diverse and reflects Kylie's love of brights, reproductions, retros and 1930s prints. Kylie also offers a wide selection of classes, ranging from "bring your own project" classes to one-off specific project workshops and events with well-known guest designers.

**Local knowledge:**

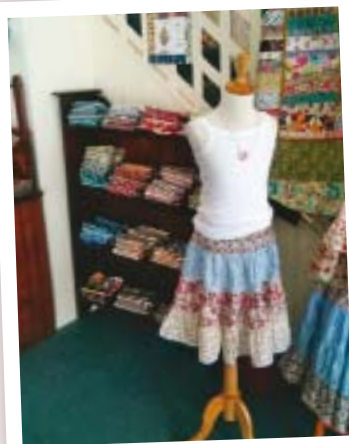
"Hawthorn is full of heritage-listed houses and buildings," Kylie says. "The area is steeped in traditional architecture and our shop mirrors the architecture of yesteryear. The excellent café next door brings an extra dimension to our area. We regularly run cross promotions and all the customers are assured of an excellent coffee and lunch."

**Address:** 77 Church Street, Hawthorn Vic 3122

**Phone:** (03) 9819 3441

**Email:** info@patchworkhouse.com.au

**Website:** www.patchworkhouse.com.au



L'uccello *Melbourne*

**A** haven of all things vintage, this delightful store first opened its doors in April 2010. Owner Kim Hurley has a passion for collecting beautiful materials and that is certainly reflected in the shop's timeless ambiance.

L'uccello is best known for its extensive range of eclectic stock and its unusual location. The first thing you notice when you step inside is the spicy floral fragrance of the scented pillows made in-store. You will then be charmed by the high ceilings, the wall of French doors with bevelled glass that looks out over St. Paul's Cathedral and the cabinets and tables full of all kinds of interesting goodies. "We endeavour to create a relaxed and inspiring atmosphere for people to shop in," Kim says.

It does indeed feel like you've stumbled into a different world of gorgeous vintage millinery supplies, including antique French silk ribbon, veiling, braids and stamens. The shop



carries a wide range of vintage buttons, linen and cotton threads, lace and trims, as well as premium quilting fabrics, high-quality linen, Sajou embroidery products and Valdani hand-dyed threads, a large range of colours in pure wool felt and hand-dyed woven felts. Accessories by French designer Sophie Digard and Melbourne milliner Serena Lindeman are also stocked.

**Local knowledge:**

The store is in the iconic Nicholas Building, entered via Cathedral Arcade.



It is considered a significant piece of Melbourne's architectural history and is full of artists and artisans. Once a year, many of the tenants open their studios to the public, see [www.thenicholasbuilding.blogspot.com](http://www.thenicholasbuilding.blogspot.com) for more details.

**Address:** 205/37 Swanston Street, Melbourne Vic 3000

**Phone:** (03) 9639 0088

**Email:** [info@lucello.com.au](mailto:info@lucello.com.au)

**Website:** [www.lucello.blogspot.com](http://www.lucello.blogspot.com)

Tranquility Crafts 'N Supplies

*Moonee Ponds*

**T**his lively shop in the suburbs of Melbourne has been owned and run by Joanne Ferguson for the past 18 years, and you will feel like you're reuniting with old friends when you drop by. Joanne and her experienced staff not only work in the shop but enjoy indulging in many of the crafts themselves, so a visit to

Tranquility Crafts 'N Supplies promises knowledgeable advice as well as a warm, friendly welcome!

Tranquility Crafts 'N Supplies stocks a large range of patchwork fabrics, embroidery and cross-stitch linens, embroidery threads and ribbons including stranded DMC, Threadworx, Cosmo and Finca Perle in sizes 3, 5, 8, 12 and 16. Kits, patterns, books and notions for stitching, painting, beading and patchwork are also on offer.

The shop is filled with beautifully finished samples enticing you to create. Why not join in a class for a fun time and make new friends who share your passion? These include sit and stitch, BOM and UFO classes, amongst others. "At the beginning of each term we have an Open Day where we display samples for upcoming classes," Joanne says. "It's a great day to drop in to the store for a cuppa and chat and catch up with what's on offer and new in the store."

**Local knowledge:**

Located approximately 7km from Melbourne's CBD, the shop offers easy access to all forms of public transport and has parking in the immediate area. It is open Tuesday to Saturday.

**Address:** 37 Holmes Road,

Moonee Ponds Vic 3039

**Phone:** (03) 9375 3575

**Email:**

[tranquilitycrafts@bigpond.com.au](mailto:tranquilitycrafts@bigpond.com.au)



## Patchwork Charm

Shepparton

The lovely Patchwork Charm in Shepparton has been supporting creativity in the Goulburn Valley area for more than 17 years. Owner Kath Gale began the shop as a means to share her love of patchwork and teaching, and indeed classes are a key part of Patchwork Charm. “We encourage customers to try things that they think are out of their reach, and we nurture their creativity into making items for people they love,” Kath says.

The charming shop has plenty to offer to even the most casual of shoppers, with fabric bundles and wonderful kits, such as the *Alphabet Jungle* quilt (pictured), available for \$125 plus p&h (fabrics will vary from the original). Patchwork Charm stocks a huge range of fabrics including country, novelty and floral prints, 1930s reproductions, batiks, Japanese styles and sweeties, and brands such as Kaffe Fassett. The store also carries Husqvarna Viking sewing



machines, Gumnut yarns, wools and silks, Colour Streams, and threads from YLI and GlenLorin.

Friendly service and support is a priority. “If customers haven’t been sewing, we want them to start. If they don’t want to put colours and fabrics together, we can assist them,” Kath says.

**Local knowledge:**

An annual display of quilts is held at the local Forty Winks store where Kath’s customers proudly display their beautiful achievements. The event is widely acclaimed in the area and is a fundraiser for a local charity.

**Address:** 98A Wyndham Street,  
Shepparton Vic 3630

**Phone/fax:** (03) 5831 5295

**Email:** [info@patchworkcharm.com.au](mailto:info@patchworkcharm.com.au)

**Website:** [www.patchworkcharm.com.au](http://www.patchworkcharm.com.au)

## GingerBears of Benalla

Benalla

Jan Hateley’s beautiful shop in the main street of Benalla has been serving the needs of the local craft community here for the past six years. Before that, the shop’s wonderful products were sold from the craft markets in Melbourne.

When it comes to cuddly creations, you can’t go past this charming shop.

GingerBears specialises in handmade teddy bears and dolls, stocking mohair, teddy and doll supplies, patterns and kits. As of 2011, the shop is now also a distributor of Gerry’s Teddy & Craft Designs, located in Brisbane. As a result, there’s a lovely supply of German Schulte Mohair available in store, along with all your teddy-making needs. With her love

of teddies and gollies, Jan has created a warm and homely store with lots of readymade teddies, dolls and gifts.

You’ll also find a wonderful supply of patchwork fabrics, kits and supplies, including stitchery and appliqué patterns and kits. There is also a captivating range of BOM programs on offer including a gorgeous design by Lynn Hyland of Li’l Bloke’s, available for \$40 a month for five months, or

\$200 in full. Contact Jan for full details on this fabulous offer. With such a great variety of projects in store, you’re bound to find inspiration in every corner.

Classes are held regularly, including fun children’s workshops, casual classes and structured workshops with visiting tutors in everything from patchwork and candlewicking, to teddy-making and doll-making. Combined with the shop’s winsome atmosphere, there’s something here to appeal to all crafters. Once you’ve visited GingerBears of Benalla, you’ll want to keep coming back for more!

**Local knowledge:**

“Benalla is a pretty town offering spectacular rose gardens by a lake with walking paths around it,” Jan says.

**Address:** 93 Nunn Street,  
Benalla Vic 3672

**Phone/fax:** (03) 5762 7900

**Email:** [ginger.bears@bigpond.com](mailto:ginger.bears@bigpond.com)



Tiana (left) & Puddin (right) by Josey Freni of Bears in the Meadows. Pattern \$17.50 each, Puddin kit \$70, Tiana kit \$75, including pattern, mohair, paw pads, glass eyes and joints.

## Sew Bright Alpine Quilting

Bright

Angela Bradbury has been a passionate sewer for more than 30 years, starting with dressmaking and home décor. After completing a Certificate in Fashion at TAFE, she designed and made mainly wedding gowns and special-occasion clothing and then ventured into quilting just over 10 years ago.

Stepping inside the store, you'll be delighted by the bright and colourful quilts on the walls and the cheerful hello from Angela, who will help you choose the ingredients for your next project.

The shop offers an ever-changing mix of eclectic fabrics and patterns sourced from all over the world, along with a solid range of basics and all the gadgets to make stitching easier. There are lots of brights and retro prints available, as well as something a little different to make unique projects. You'll find fabrics by Michael Miller, In the Beginning Fabrics, FreeSpirit, Kaffe Fassett, Riley Blake,

Alexander Henry, Studio e and Clothworks just to name a few. And arriving soon are the new Christmas ranges, *Countdown to Christmas* and *Flurry* by Moda.

Spacious and bright, the inviting shop has lots of room for classes and get-togethers. "Workshops can be personalised and customised to suit participants and we can even create a unique getaway package for you and your friends," Angela says.

**Local knowledge:**

As a part of the Bright Spring Festival in October, Sew Bright Alpine Quilting hosts an exciting weekend of workshops, wine and laughter at Stitch and Quilt in Bright. Contact Angela to register your interest and be kept up to date with this inspirational event.



Penang Palms in Diamonds quilt pattern \$15 each. A fabric kit containing a selection of Kaffe Fassett fabric is available from \$177.80, plus p&h.

**Address:** 2/4 Ireland Street,  
Bright Vic 3741

**Phone/fax:** (03) 5755 5118

**Email:** [lovequilting@sewbright.com.au](mailto:lovequilting@sewbright.com.au)

**Website:** [www.sewbright.com.au](http://www.sewbright.com.au)

# SUBSCRIBE TO HOMESPUN

www.completecraft.com.au  
AUSTRALIAN  
PATCHWORK • QUILTING • STITCHERY

& receive a **FREE** portable craft table

## SUBSCRIBE OR RENEW AND GET...

10 issues of *Homespun* magazine delivered to your door — normally \$99.50

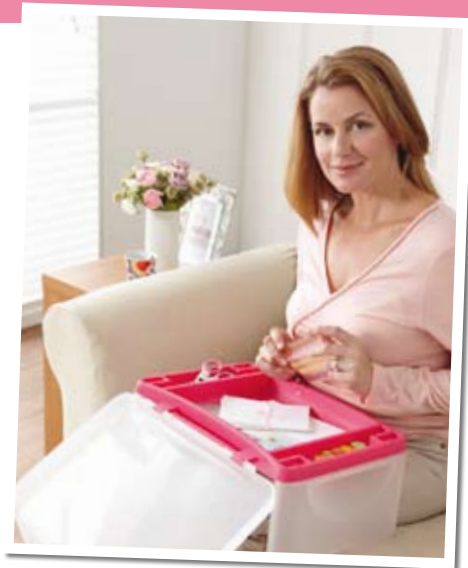
+ **FREE** Craft Table from The Fox Collection — RRP \$19.95

**Total value of \$119.45**  
**for ONLY \$69.95**

**Turn to page 99 for more details**

**VISIT:** [www.universalshop.com.au](http://www.universalshop.com.au)

**CALL:** 1300 303 414



Visit [www.thefoxcollection.com.au](http://www.thefoxcollection.com.au) for the biggest and best choice of needlework and craft supplies!

TO RECEIVE THIS OFFER PLEASE QUOTE THE CODE: C/HS12.6 HURRY! OFFER ENDS: JULY 5, 2011

## Country Heart &amp; Home

Bright

In March, 2001, owner Amanda's long-held dream of owning a craft shop became a reality, with much support from her talented husband Brett. Country Heart & Home moved into its current premises, a renovated 1939 house in the main street, in 2002. With its huge range of candles, melts and scented sachets, the shop is a scent sensation from the moment you walk inside, and you will be enchanted by all the beautiful, rich colours prominent in the true American Country style, and the wonderful staff who greet you with a happy smile.

The shop offers more than nine rooms of dolls, bears, folk art, Christmas, candles, furniture, quilts, fabric, patterns, craft supplies and more from local and interstate artisans, as well as quality imports from the USA, Canada and England. There are more than 1000 bolts of patchwork and quilting fabric on offer, including Moda fabrics, Wyndham Fabrics, Red Rooster Fabrics, checks



Home Sweet Home Saltbox House table runner is available in a kit, including 12 x 60in pattern, table runner, all fabric for appliqué and threads for \$34.95, plus \$8.50 p&h.

and plaids, lots of flannel fabrics, and so much more!

"Our store is a true destination point for those who love that country feel," Amanda says. "We are of the philosophy that quilting is something that anyone can try and we are here to help."

**Local knowledge:**

In August, the shop will host its eighth Christmas in Wintertime festival. "The whole store is converted into what's new



for Christmas each year," Amanda says. "We combine this with lots of in-store fun, raffles and a Christmas dinner in a local restaurant."

**Address:** 6 Barnard Street,  
Bright Vic 3741

**Phone:** (03) 5750 1522

**Email:** [countryhearthome@bigpond.com](mailto:countryhearthome@bigpond.com)

**Website:**

[www.countryheartnhome.com](http://www.countryheartnhome.com)

**Blog:** [www.homespunmemoriesbright.blogspot.com](http://www.homespunmemoriesbright.blogspot.com)

## Kimono Girls

Bright

This innovative shop in north-eastern Victoria has been trading for seven years, with three years in its current location. Owned by Megumi Kobayashi and managed by Andrew Hall and Keiko Sanderink, Kimono Girls started out with beads and buttons before moving into fabric.

Best known for its stunning selection of Japanese fabrics, gorgeous buttons made of fabric set in resin and beads, the shop is always up to date with the latest trends. As you step across the threshold, you're greeted by gorgeous jewellery and the large wall unit of rolls of lush fabric. The promise of a good time hangs in the air and your shopping experience is soundtrack by a variety of great tunes — you can expect anything from Enya to Elvis.

The shop's specialist product is the range of buttons consisting of beautiful fabric set in resin, of which



Kimono Girls is the sole importer. There are also several different lines of designer jewellery available, as well as unique patterns by Rhonda Shallcross, an extremely talented designer who worked in the ABC's costume department for 25 years and who also makes samples for the shop.

**Local knowledge:**

Bright is located in the Victorian Alps, offering breathtaking scenery. "Mt Buffalo is the closest point for a trip to the mountain, with the old chalet there an icon in the area," Andrew says. "There are many great outdoor activities, including bike riding. There is also an abundance of wineries and cafés — even a brewery."

**Address:** 7 Barnard Street,  
Bright Vic 3741

**Phone:** (03) 5755 2244

**Email:** [info@bbjewels.com.au](mailto:info@bbjewels.com.au)

**Website:** [www.kimonogirls.com.au](http://www.kimonogirls.com.au)

Advert  
mac's crafts  
67